

## Participating Households

Total number of participating households = **121**

Assessments conducted between **November 2009** and **March 2010**

<i>Representation by locality</i>		<i>Households</i>
<i>Suburb:</i>	<i>Alstonville</i>	<i>62</i>
	<i>Wollongbar</i>	<i>33</i>
	<i>Other suburbs</i>	<i>26</i>
<i>Postcode:</i>	<i>2477</i>	<i>95</i>
	<i>Other postcodes</i>	<i>26</i>
<i>LGA:</i>	<i>Ballina</i>	<i>117</i>

## Average Energy & Water Usage

Electricity and gas usage = **28.2 MJ/person/day**

(NSW average = 44.2 MJ/person/day, including electricity, natural gas and LPG, 2006-2007)\*

Mains potable water usage = **190 litres/person/day**

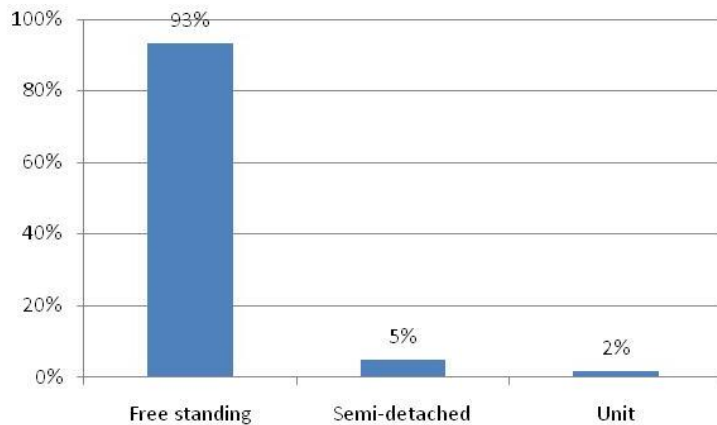
(NSW average = 221 litres/person/day, distributed water usage, 2004-2005)~

Household size = **2.6 people/household** (Australian average = 2.5)^

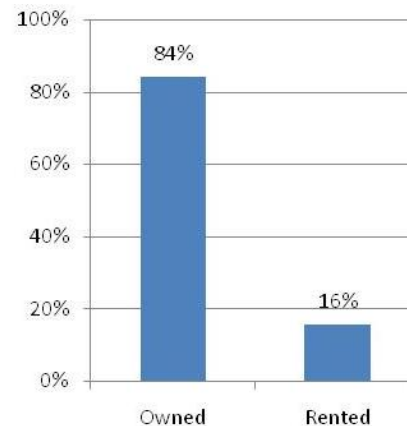
**NABERS rating** Median energy rating - **3 Stars (above average performer)\*\***

Median water rating – **3.5 Stars (above average performer)\*\***

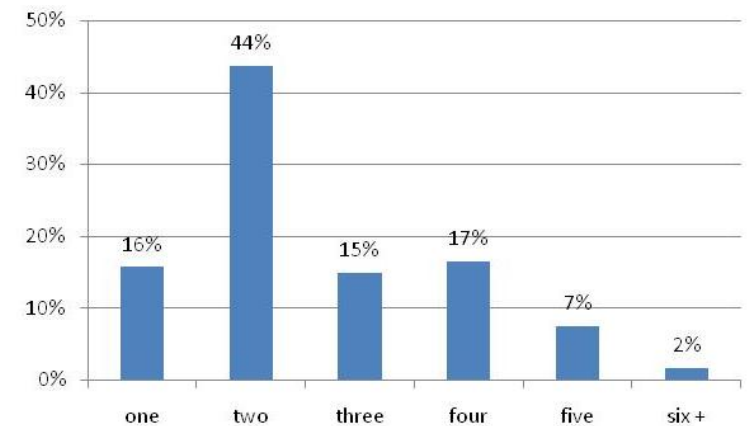
## Type of dwellings



## Occupancy status



## Household size (number of people)



\*abare energy update 2008, and ABS Australian Demographic Statistics (doc: 3101.0)

~ABS Water Account, Australia (doc: 4610.0)

^ABS Year Book Australia, 2008

\*\* in some cases the NABERS and raw energy and water statistics may not correlate to each other as the NABERS rating is weighted against greenhouse emissions, household size and other factors.

## Household Review Summary

**81 households** participated in the telephone review survey.

This represents **67% coverage** of participating households.

## What was implemented?

Of the actions recommended, participating households report to have

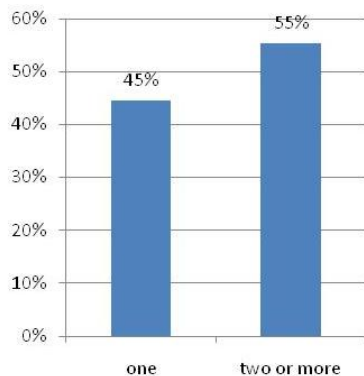
**Implemented 40%** of the actions

**Investigated 10%** of the actions

**Not Implemented 31%** of the actions

With the remaining 19% of actions deemed 'Not Relevant' for their household

## Refrigeration



**63%** of households have taken simple action (by adjusting the fridge/freezer temperature)

**35%** of households with two or more refrigerators have consolidated units.

## Stand-by Power

**84%** of households have taken action to reduce stand-by loads

## Ceiling Insulation

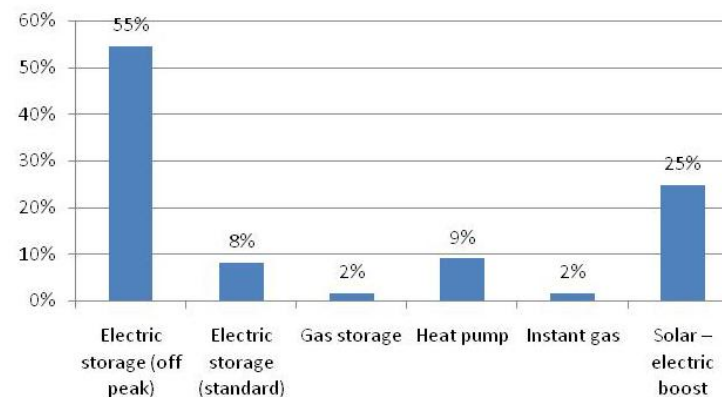
**10%** of households without ceiling insulation have now installed it (**note:** one household)

## Lighting

**71%** of households with incandescent globes have upgraded to CFL's

**42%** of households with halogen globes have upgraded to more efficient units

## Hot Water Systems (% households with each type)



**22%** of households with electric hot water systems have upgraded to more efficient units (solar, etc).

## Air Conditioning

Of the **67%** of households with air conditioners installed, **around half** have adjusted the temperature set-point. Significant uptake was also reported on issues including using the AC with fans and adjusting duct work.